



Supervisory Redistricting 2021

Santa Cruz County

Advisory Redistricting Commission (ARC21)

Public Workshop

The purpose of these workshops is to inform the public on Santa Cruz County redistricting efforts and gain public input on where district lines should be drawn.

In addition to an all-county workshop on September 1st, regional public workshops have been held virtually and in-person at the following locations:

Mid-County	North County	South County
Sheriff's Community Room, 5200 Soquel Ave, Live Oak	Felton Branch Library, 6121 Gushee St, Felton	Starlight Elementary, 225 Hammer Dr, Watsonville
September 22, 2021, 6:30 p.m.	September 29, 2021, 6:30 p.m.	September 30, 2021, 6:30 p.m.

County residents and community members can continue to provide public input online on the [Community of Interest](#) page or by emailing us at Redistricting2021@santacruzcounty.us

What is Redistricting? Why it Matters?

Redrawing District Boundaries

After every decennial census, district boundaries are redrawn so that each district is substantially equal in population.

Electing Representatives

Redistricting determines which neighborhoods and communities are grouped together into a district for purposes of electing a board member.

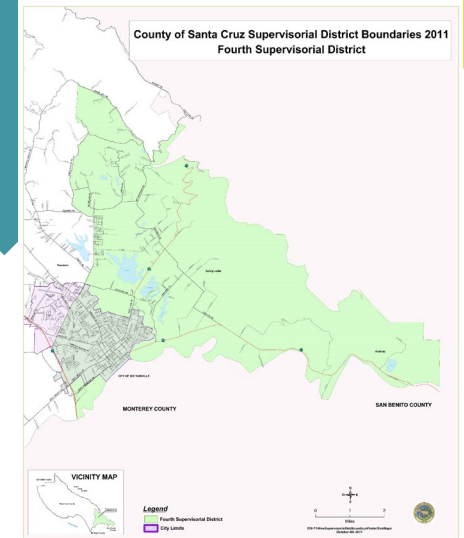
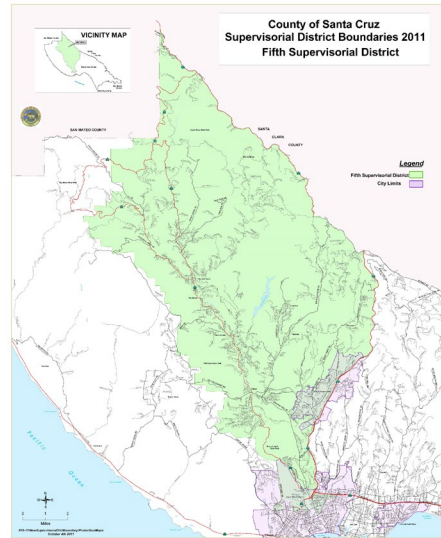
Population Equality

Redistricting is important in ensuring that each board member represents about the same number of constituents.

Your Voice

Redistricting has been used at times to exclude communities from political power. By fully participating in and monitoring the redistricting process, more communities may have a better opportunity to elect candidates of their choice and voice their needs and interest.

Advisory Redistricting Commission



Kris Reyes

Third District

Supervisor Ryan Coonerty

James Mosher

Fifth District

Supervisor
Bruce McPherson

Cheri O'Neil

First District

Supervisor Manu Koenig

Michael Watkins

Second District

Supervisor Zach Friend

Peter Radin

Fourth District

Supervisor Greg Caput

Line Drawing Criteria by Order

Under AB 849 and Election Code 21500, supervisorial districts must be drawn under the following order of priority:

Federal requirements

1 – Equal Population

Districts must be of substantially equal population

2 – Voting Rights Act

Districts must comply with the Voting Rights Act to ensure that minorities have an equal opportunity to elect representatives of their choice.

State requirements

1 – Contiguity

Districts shall be geographically contiguous, so that all parts of the district are connected to one another.

2 – Communities of Interest

The geographic integrity of any local neighborhood or community of interest shall be respected in a manner that minimizes its division.

3 – Geographic Integrity

To the extent practicable, the geographic integrity of a city or census designated place shall be respected in a way that minimizes its division.

4 – Identifiable Boundaries

District boundaries should be easily identifiable and understandable to residents. Districts shall be bounded by natural and artificial barriers, by streets, or the county line.

5 – Geographical Compactness

Districts shall be drawn to encourage geographic compactness in a manner that nearby areas are not bypassed in favor of more distant ones.

Political Parties

The Board shall not adopt district lines for the purposes of favoring or discriminating against any political party.

Communities of Interest (COI)

Communities of Interest

- A COI is a concentrated population which shares common social and economic interests that should be included within a single district for purposes of its effective and fair representation.

Defining your Community

- People can belong to multiple COIs. Your community can be defined by the geography, by boundaries, and/or by landmarks.
- What issues do you and your neighbors care about?
- How does influencing the maps help your cause?

Participating in the Process

- Provide public input at meetings and/or submit your comments to the commission.
- Tells us about your COI and map it using the mapping tools on our website.

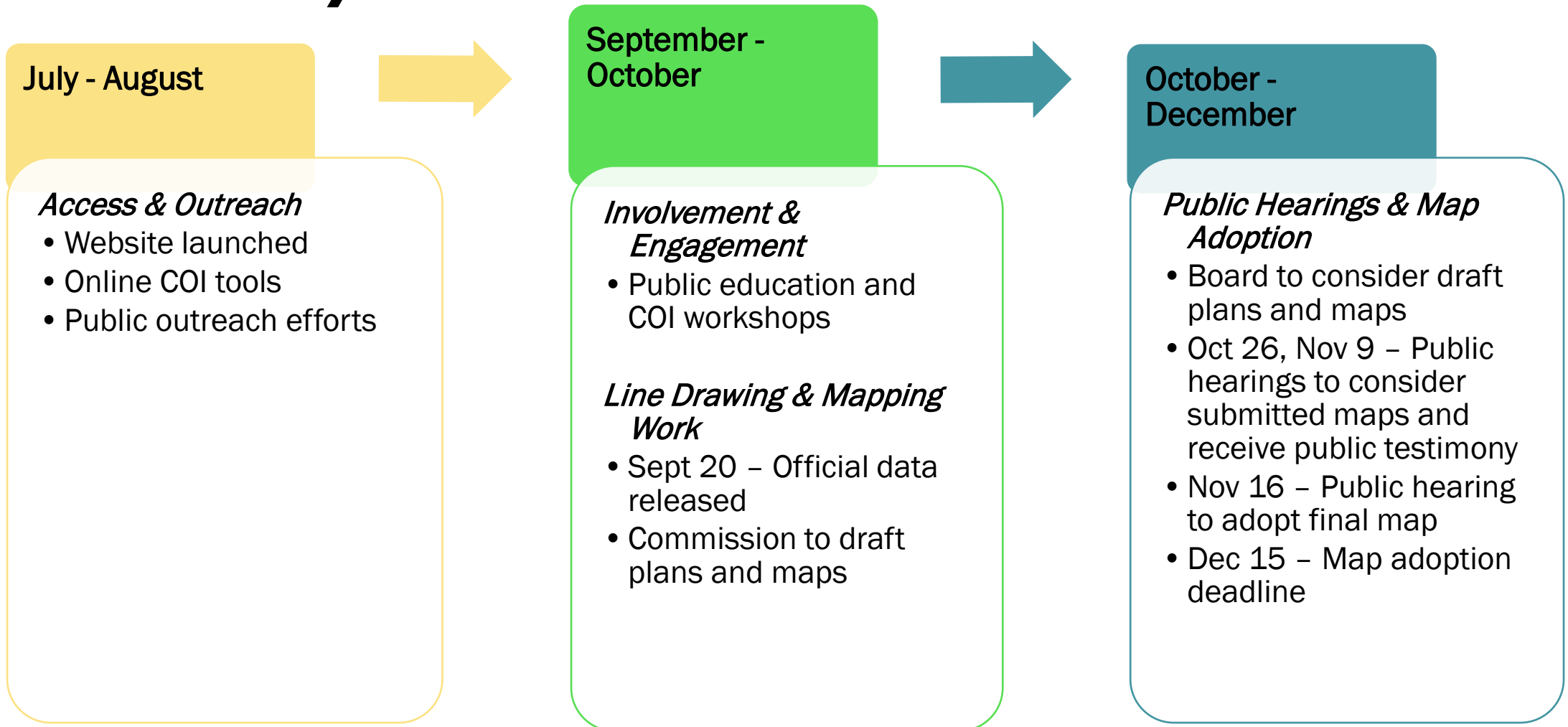
1. Begin by naming your community.
2. What are your shared interests?
3. What brings you together?
4. What is important to your community?
5. Are there nearby areas you want to be in a district with? Which streets form your community boundaries?
6. Nearby areas you don't want to be in a district with? Why or why not?
7. Has your community come together to advocate for important services, better schools, roads, or health centers in your neighborhood?

Communities of Interest

What brings you together?

What is important to your community?

Timeline/Phases



Get Involved



Santa Cruz County

Santacruzcounty.us/Redistricting2021



California

WeDrawTheLinesCA.org



Cities and Other Special Districts